

# SME FORUM

## Adapting to Change

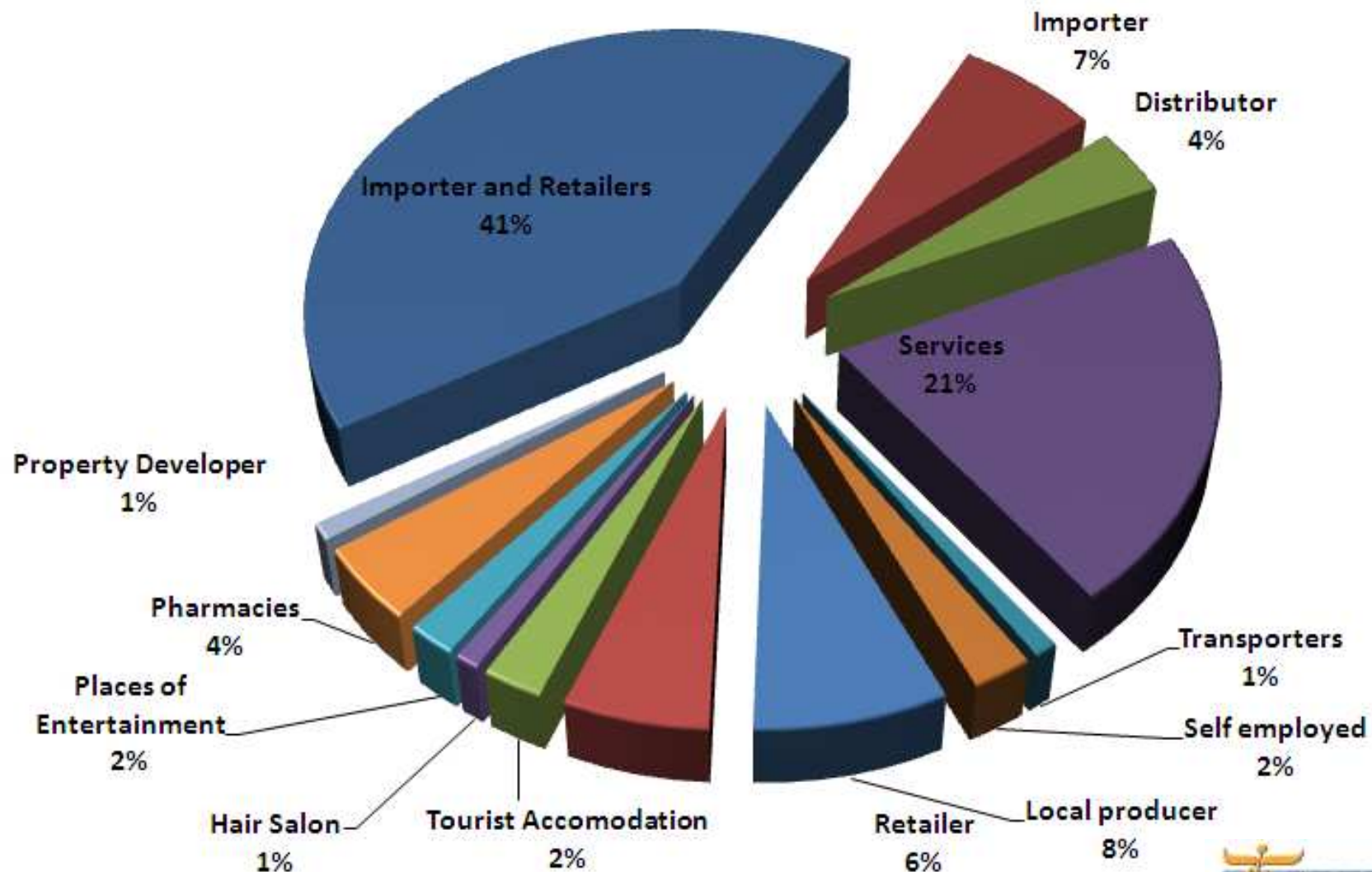
Tuesday 24th June 2008  
Radisson SAS Baypoint

January 2008 to June 2008 Business Survey Results

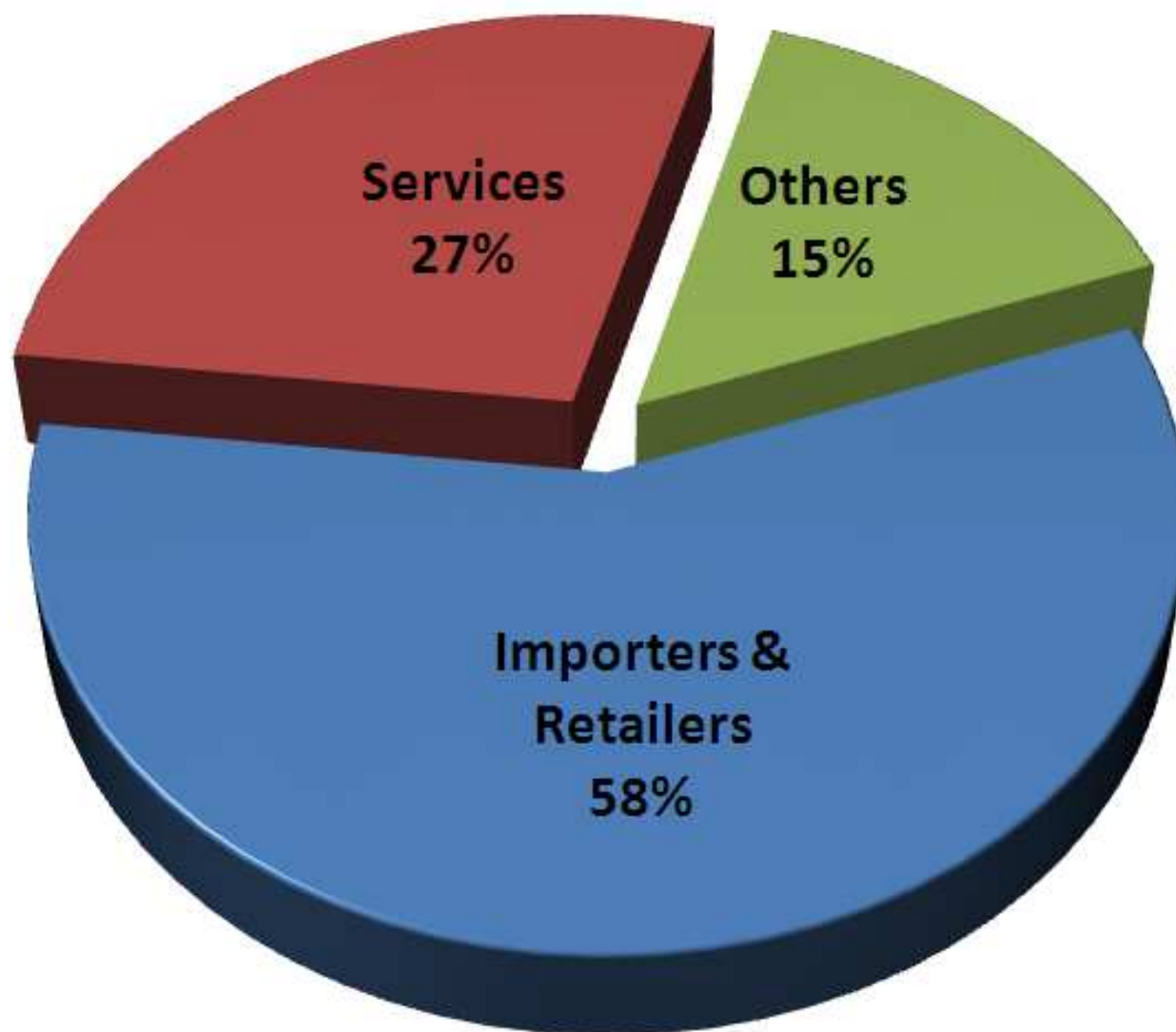


# What is your line of business ?

(Single selection per respondent)

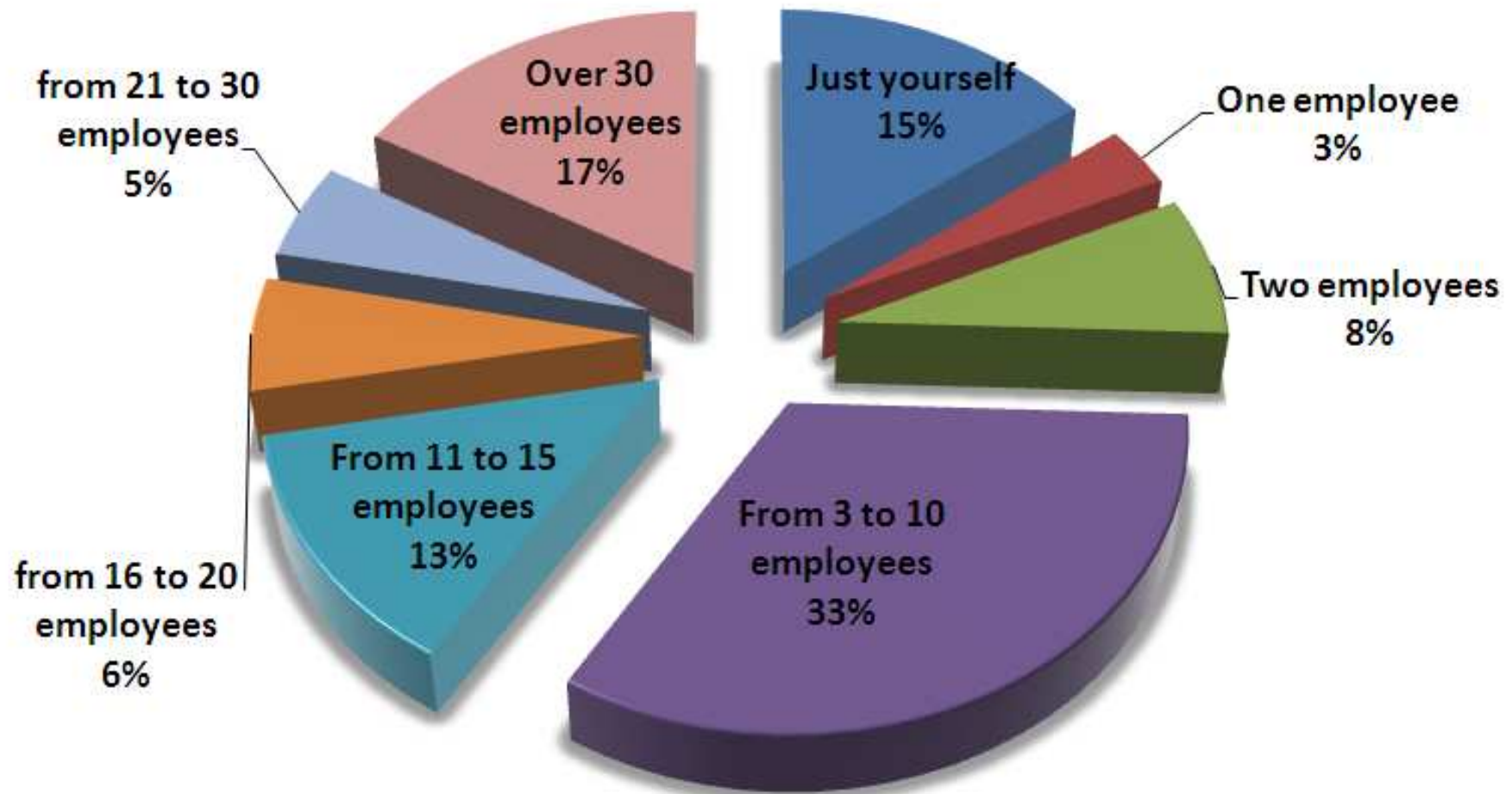


## What is your line of business ?



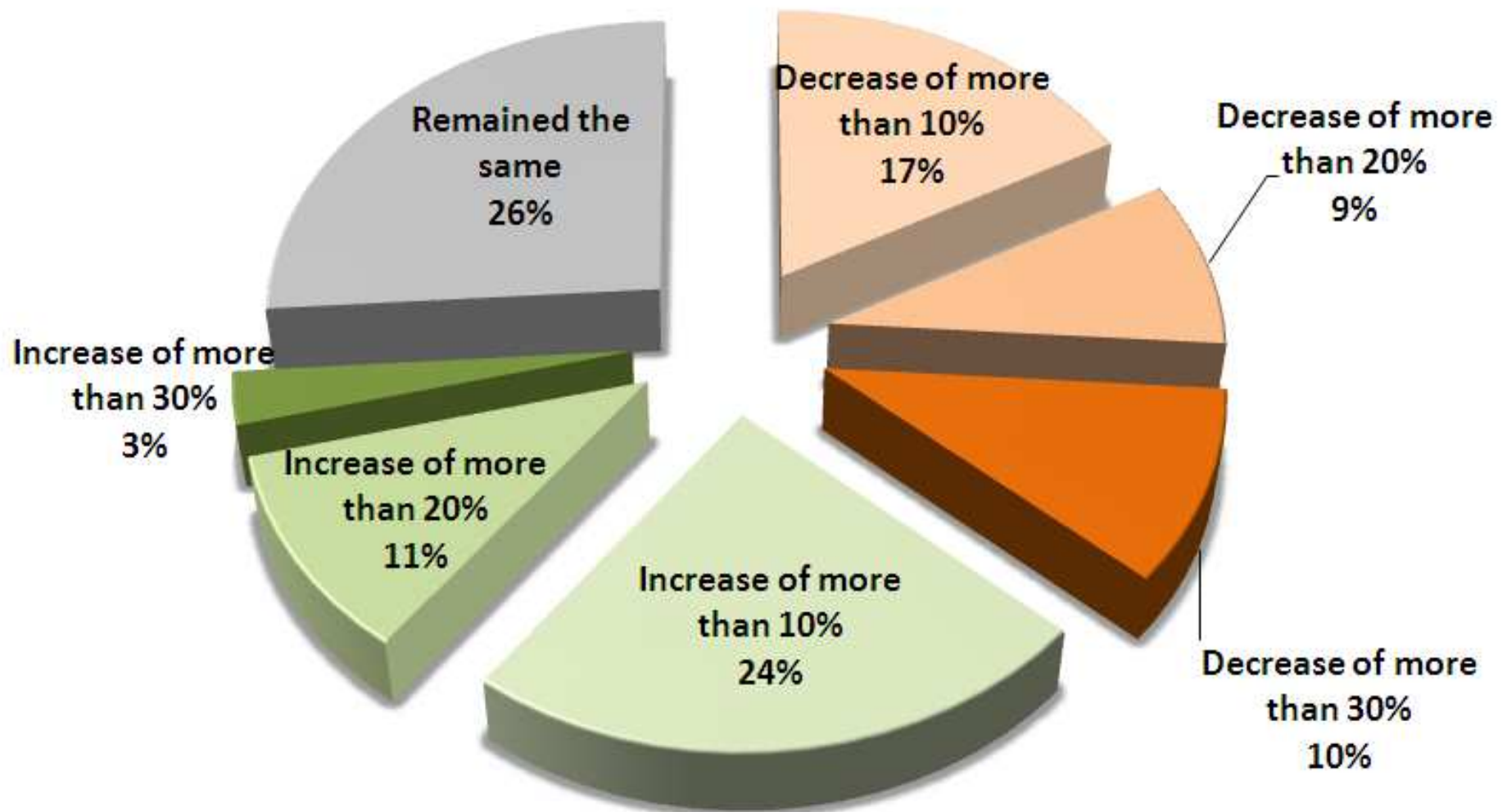
# How many people do you employ ?

(Single selection per respondent)



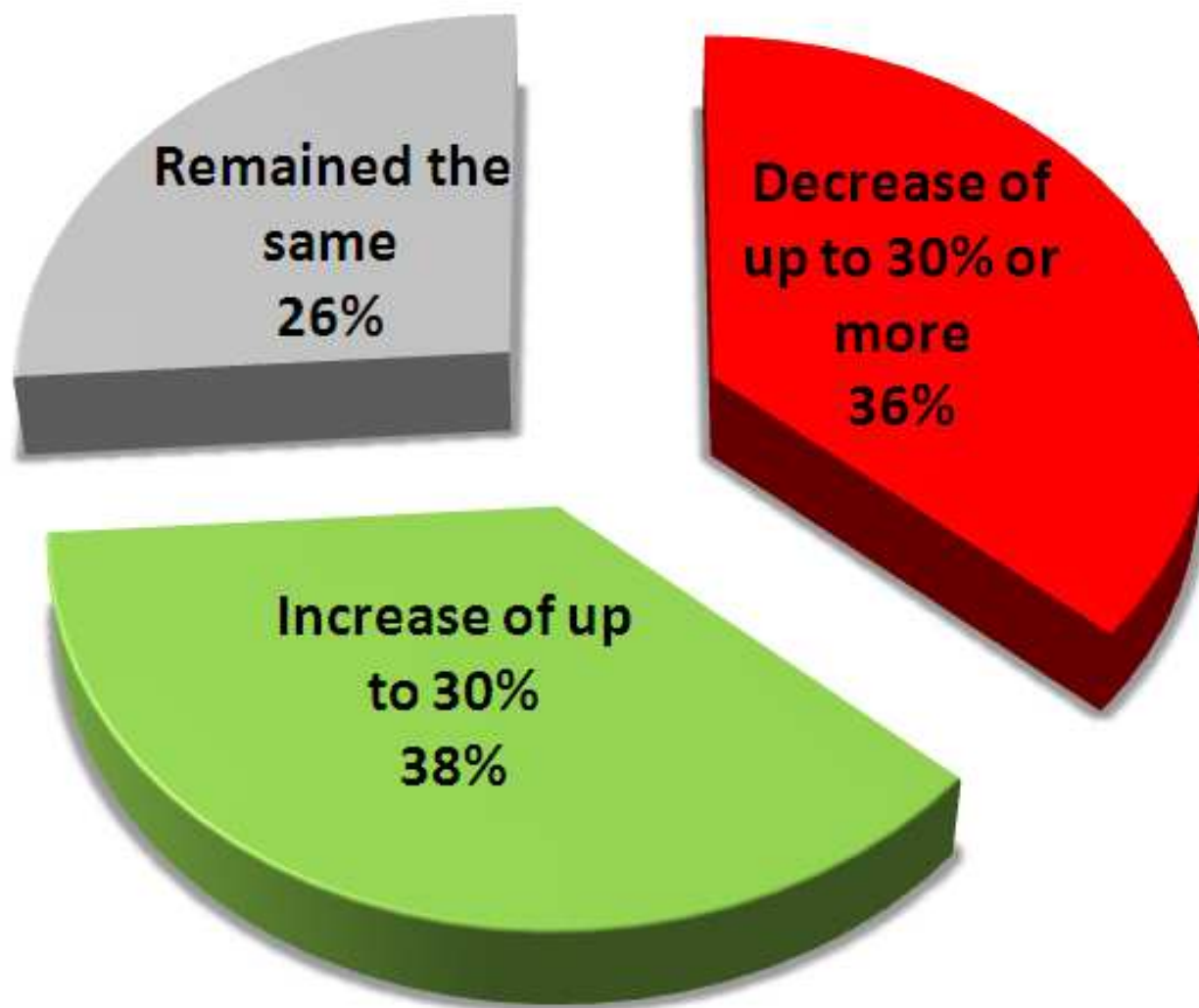
# How do you compare your turnover in the first 6 months of 2008 with the same period last year ?

(Single selection per respondent)



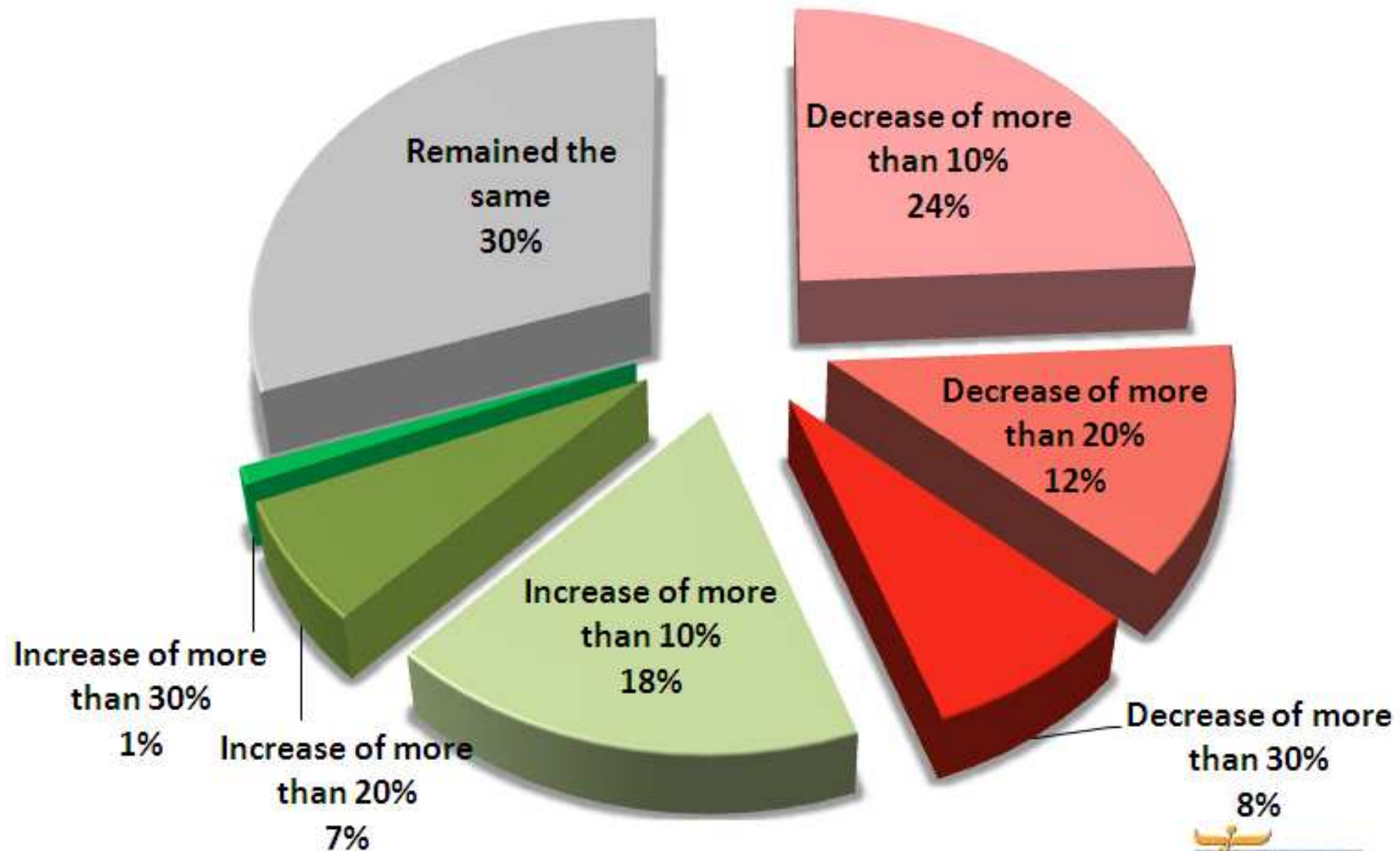
# How do you compare your turnover in the first 6 months of 2008 with the same period last year ?

(Single selection per respondent)



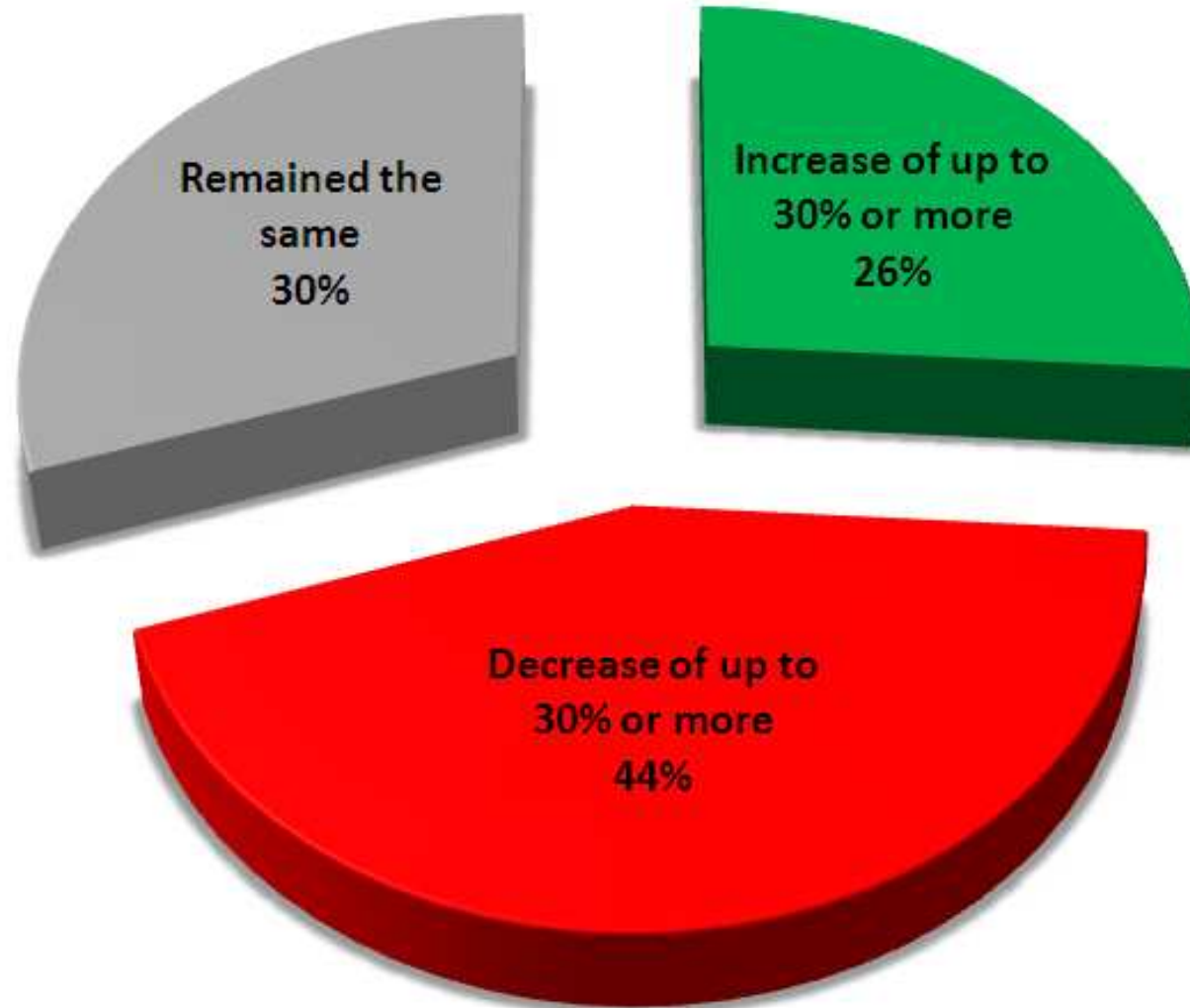
# How do you compare your profit in the first 6 months of 2008 with the same period last year ?

(Single selection per respondent)



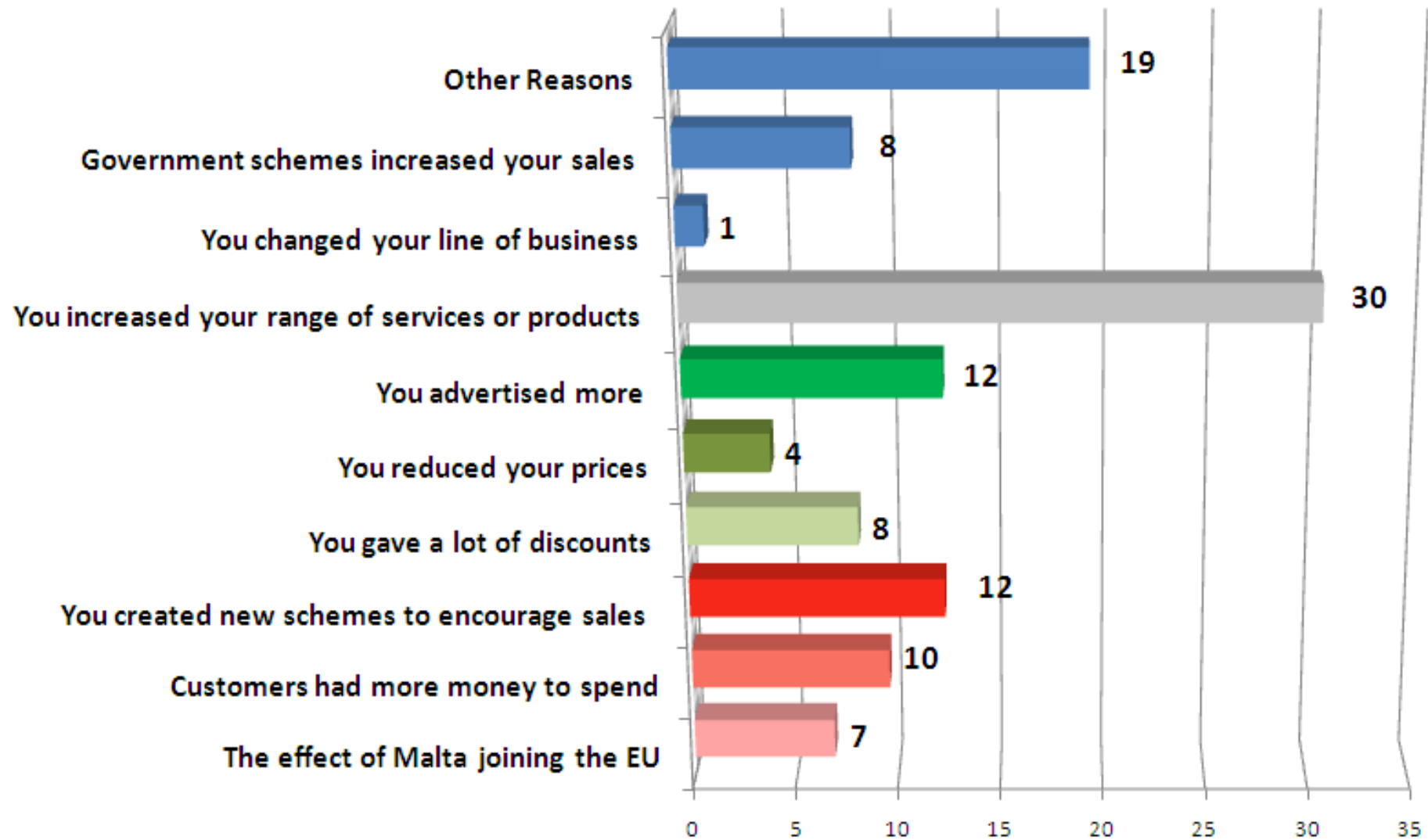
# How do you compare your profit in the first 6 months of 2008 with the same period last year ?

(Single selection per respondent)



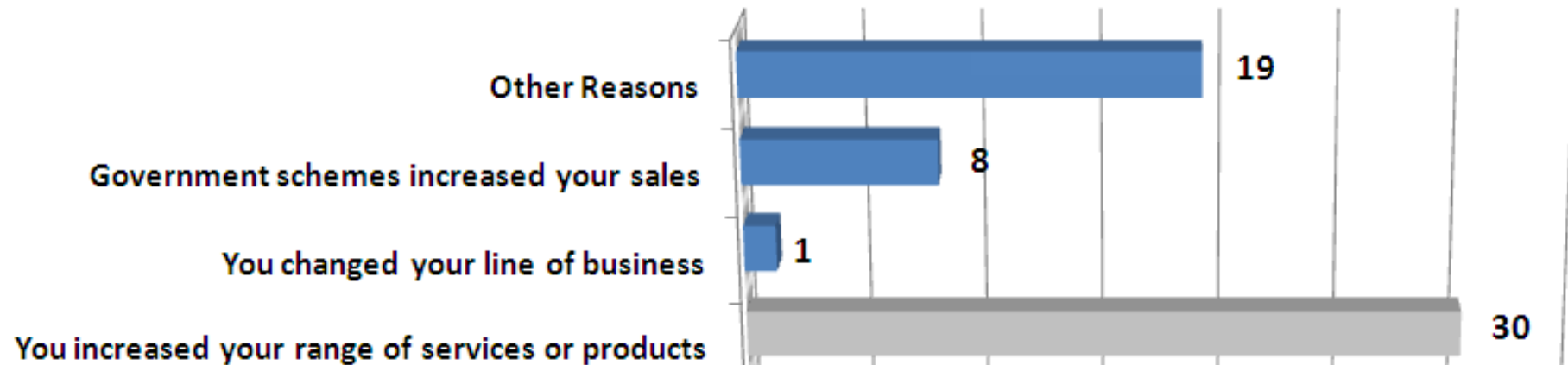
# Why do you think your business did better in the first six months of 2008?

(Multiple selections - of those who did better)



# Why do you think your business did better in the first six months of 2008?

(Multiple selections - of those who did better)

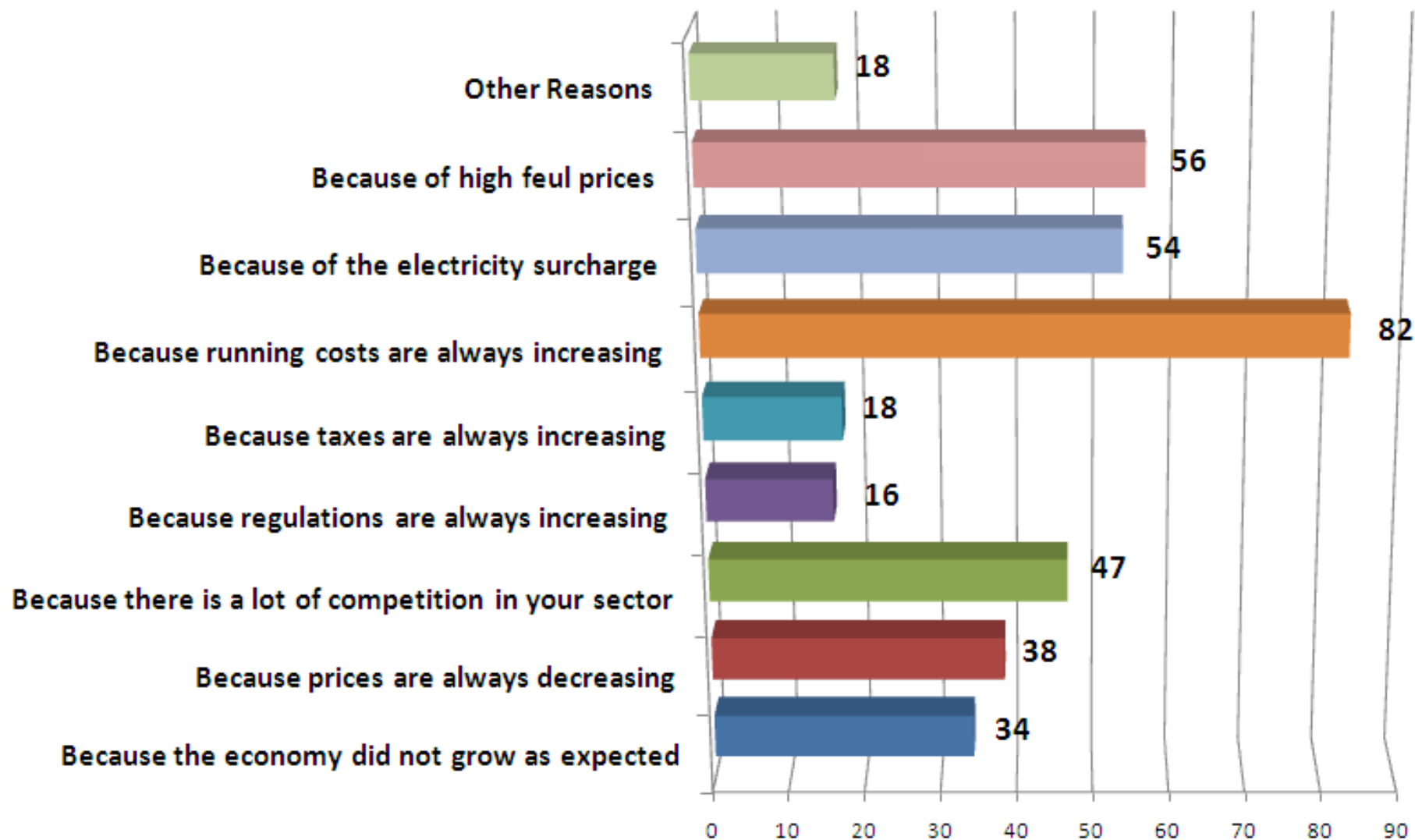


## Others :

- Low Cost Airlines
- Competitors closed down
- Reduction of stock – just in time stocks
- Employed better and more employees
- Government rebate scheme

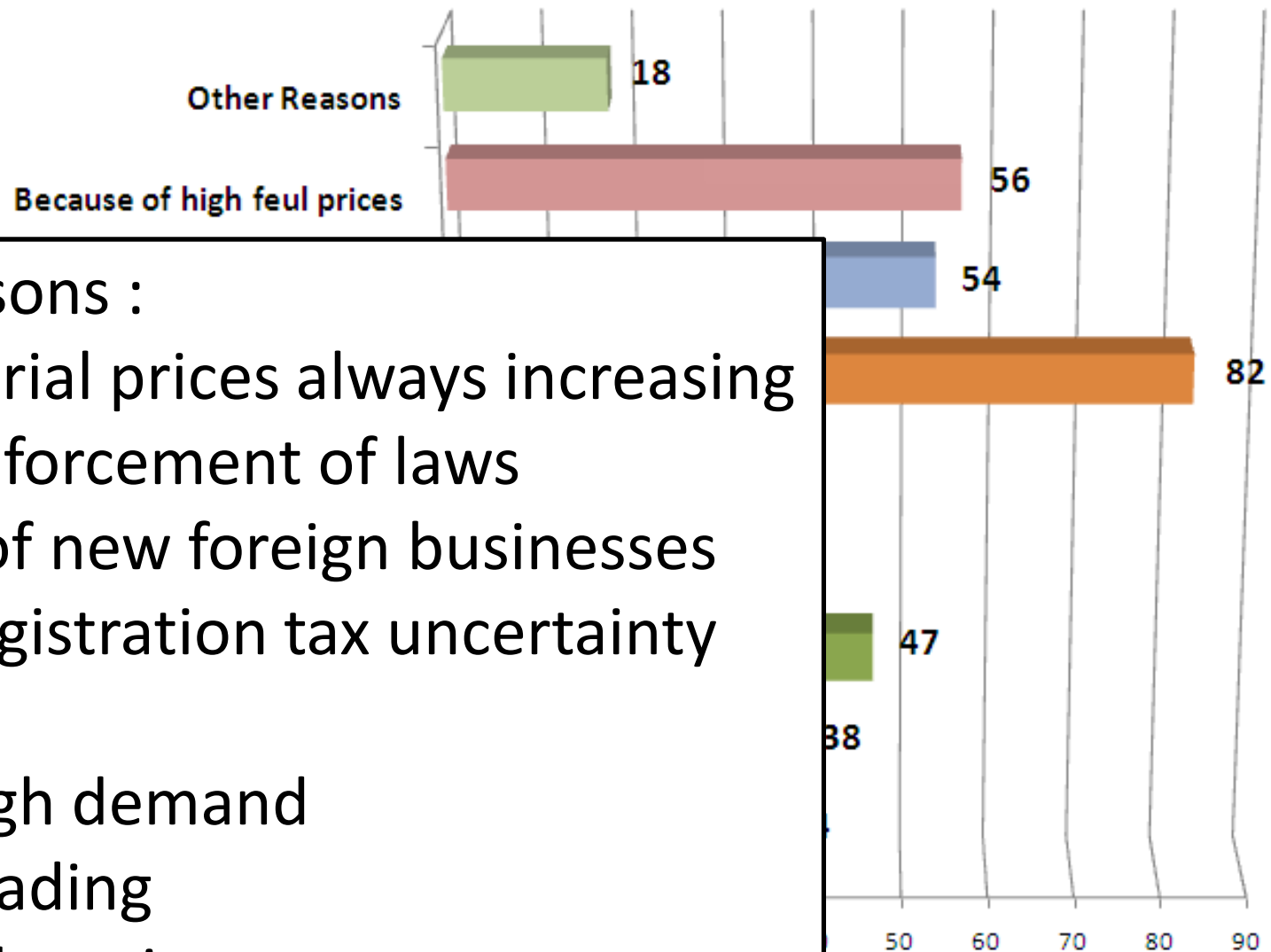
## Why do you think your business did worse in the first six months of 2008?

(Multiple selections - of those who did worse)



## Why do you think your business did worse in the first six months of 2008?

(Multiple selections - of those who did worse)

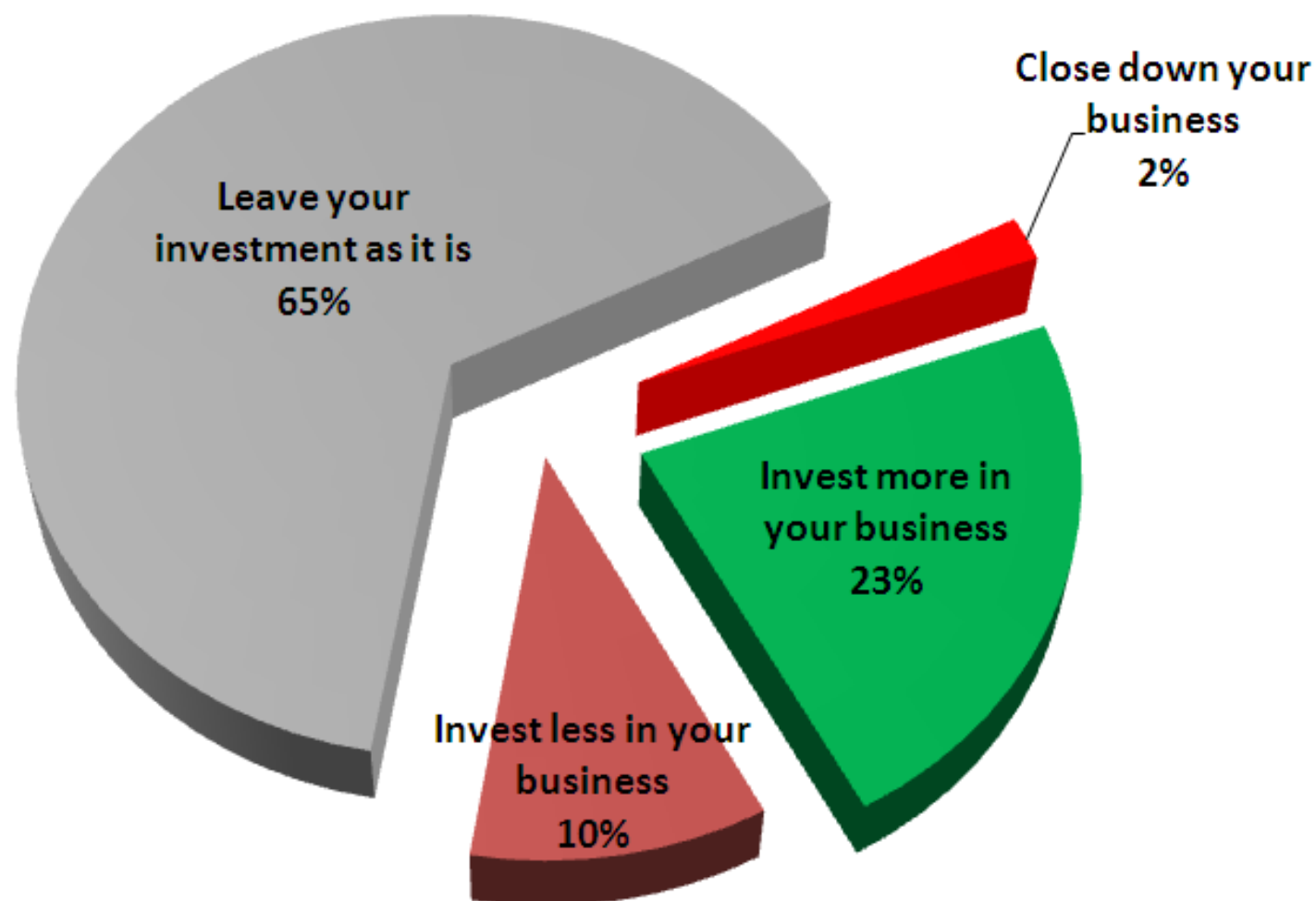


### Other Reasons :

- Raw material prices always increasing
- Lack of enforcement of laws
- Opening of new foreign businesses
- Vehicle registration tax uncertainty
- Super 5
- Not enough demand
- Parallel Trading
- Internet shopping

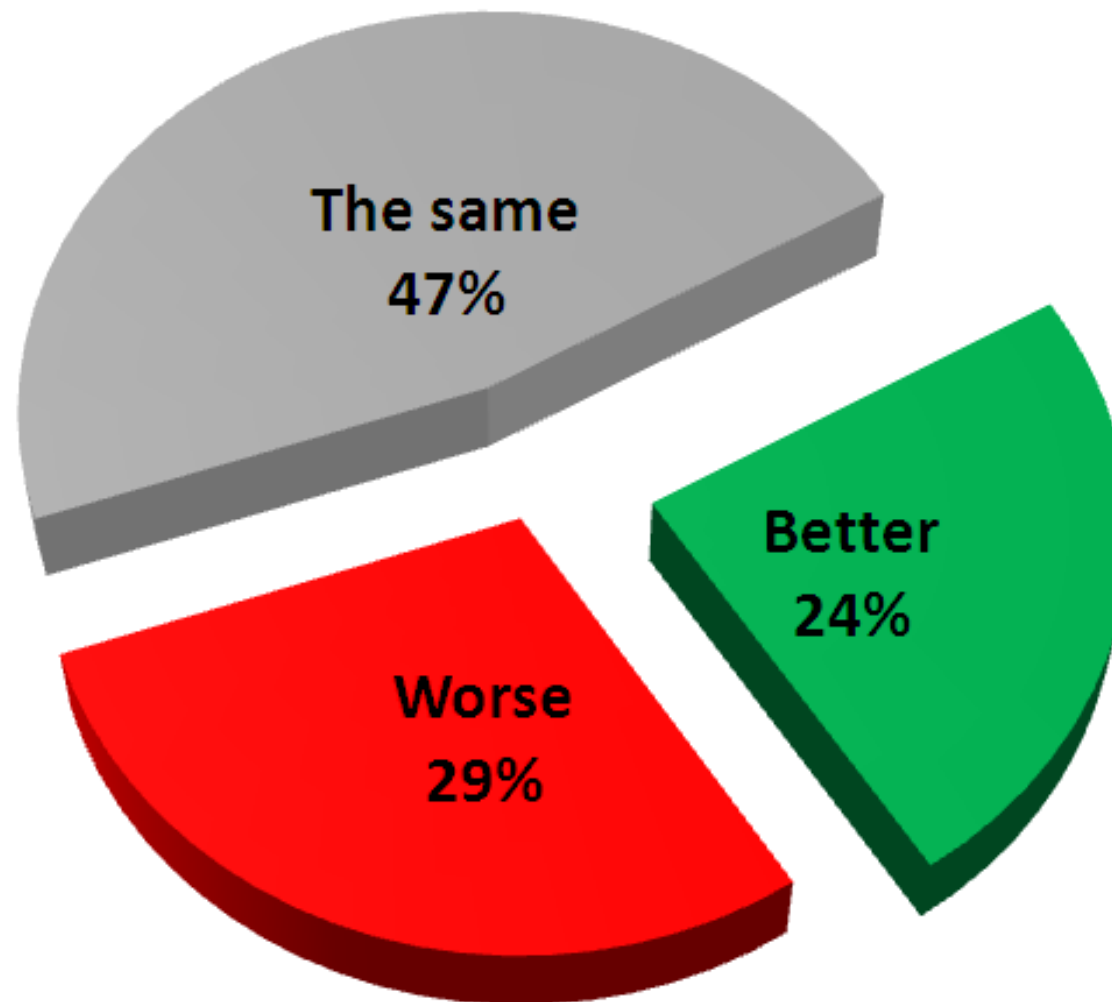
# For the remaining six months of the year you intend to ?

(Single selection per respondent)

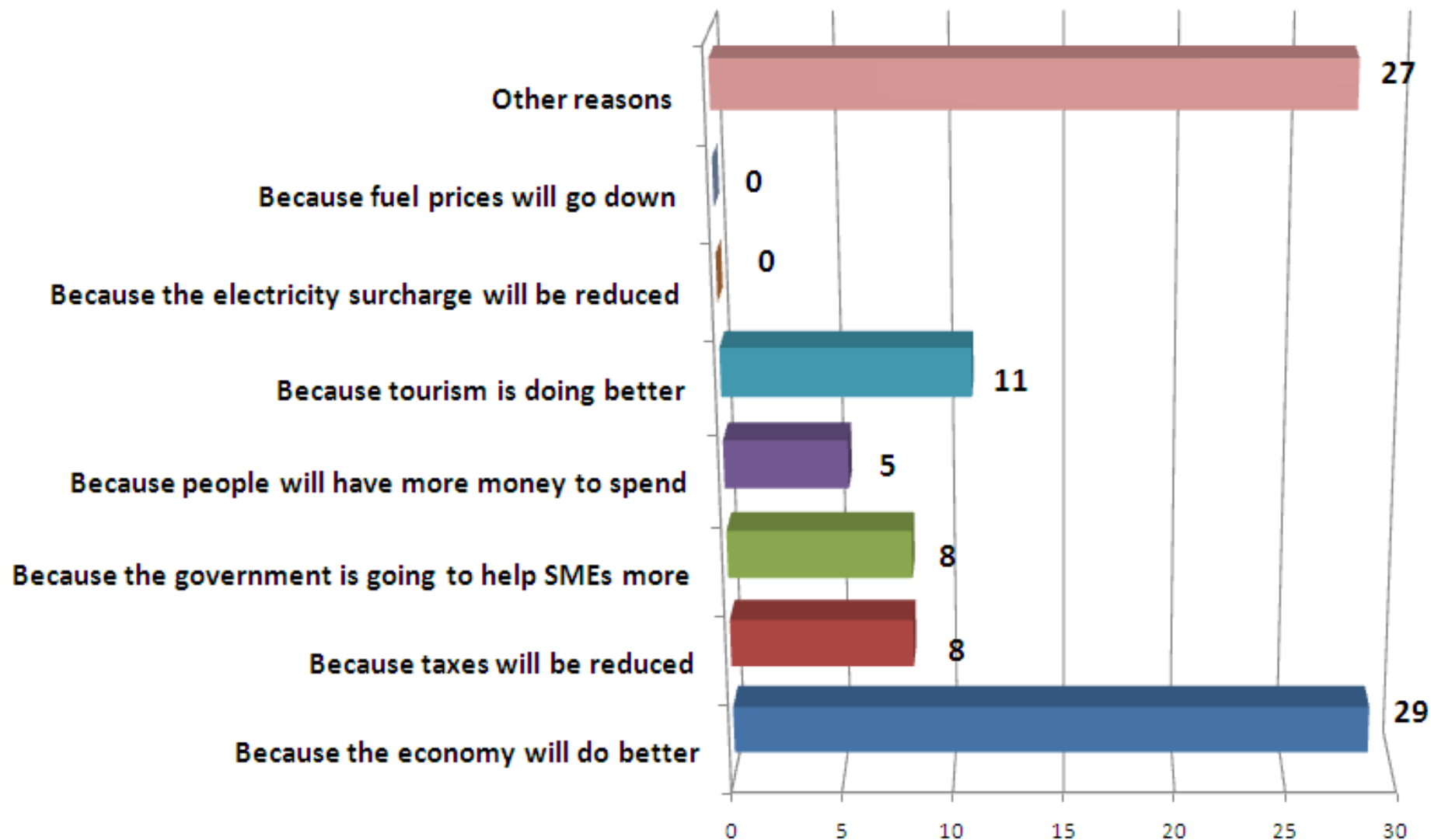


# Do you expect the remainder of 2008 to be ?

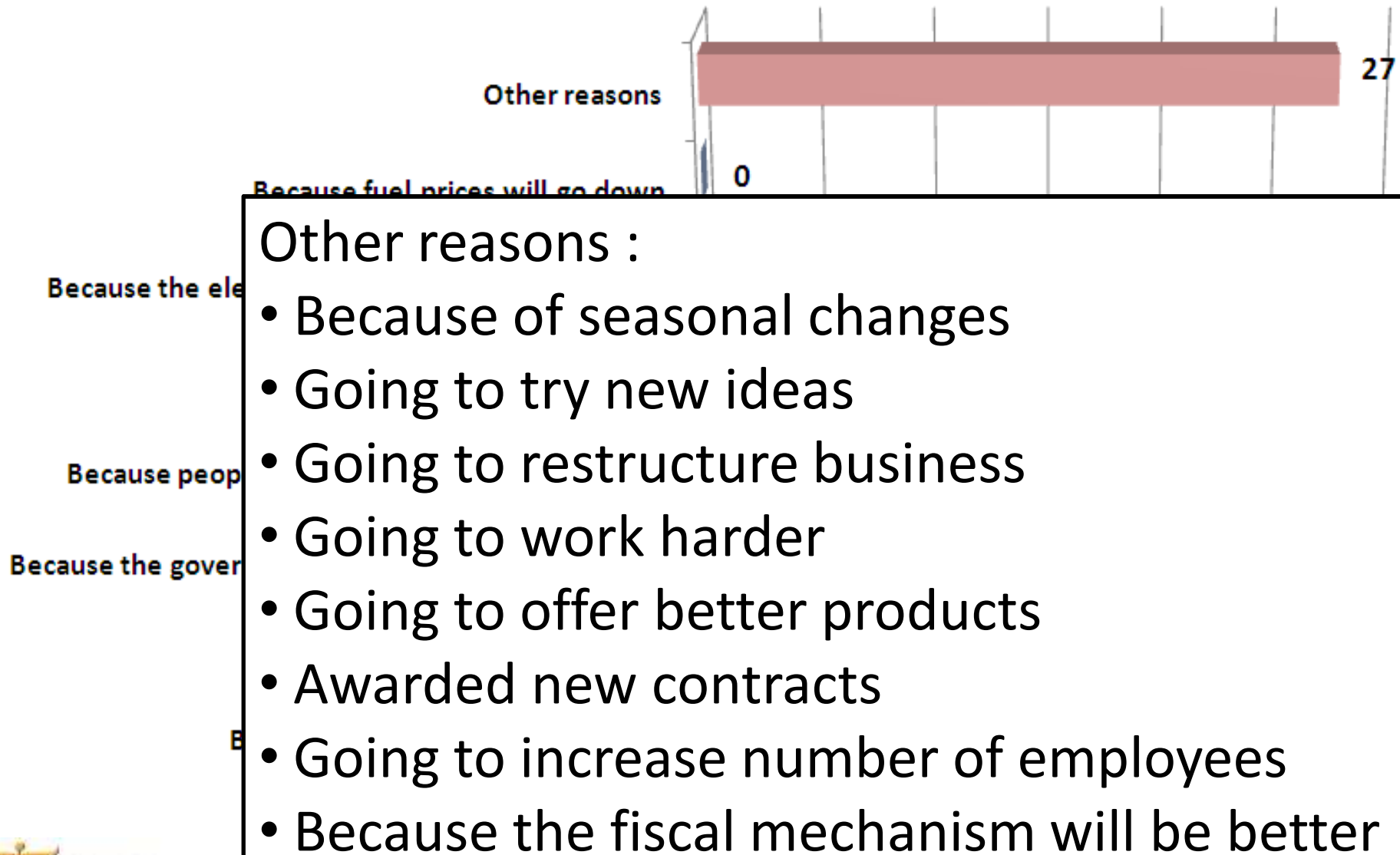
(Single selection per respondent)



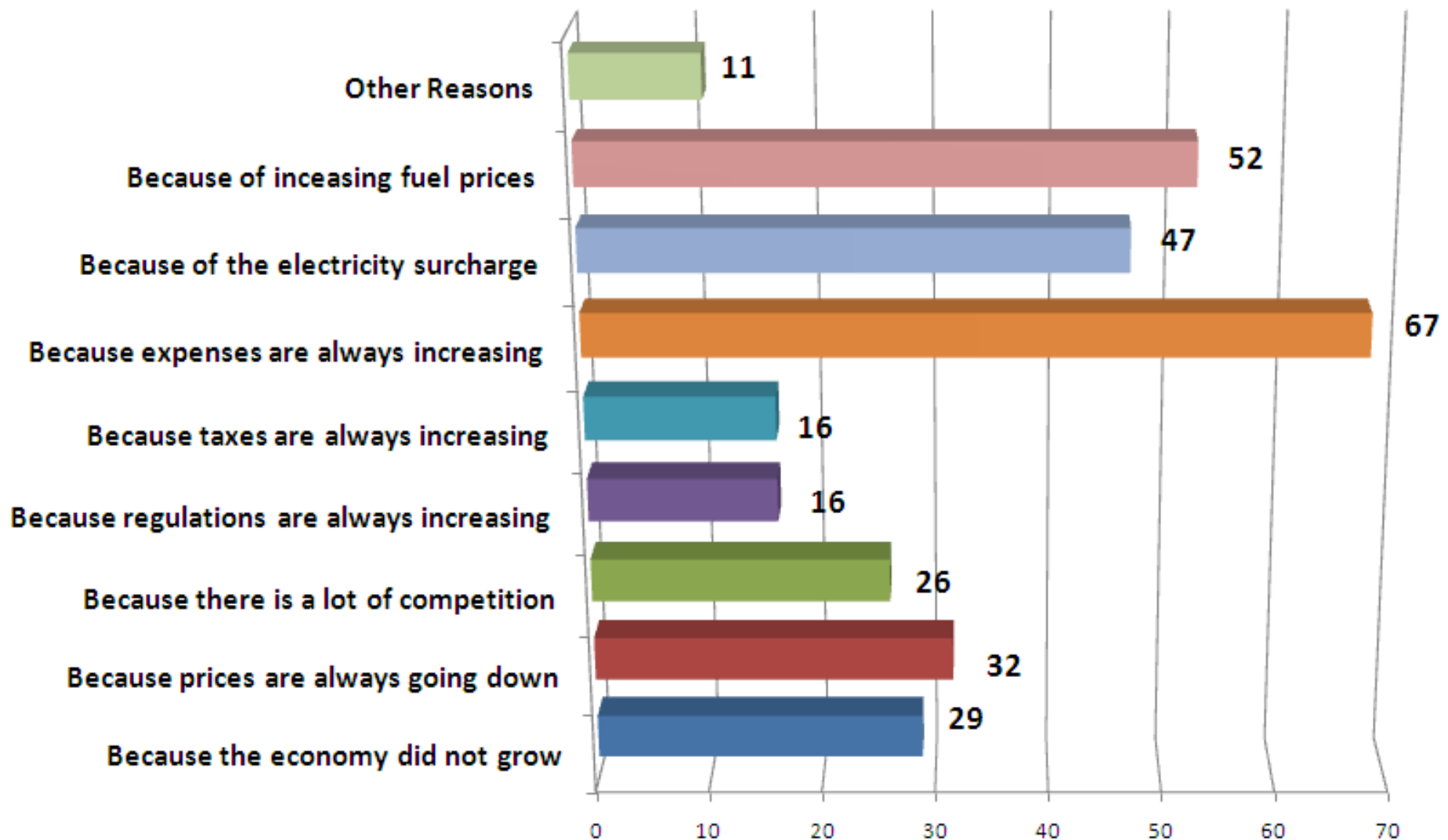
## Why do you think that the remainder of 2008 will be better ? (multiple selections out of those respondents who think it will better)



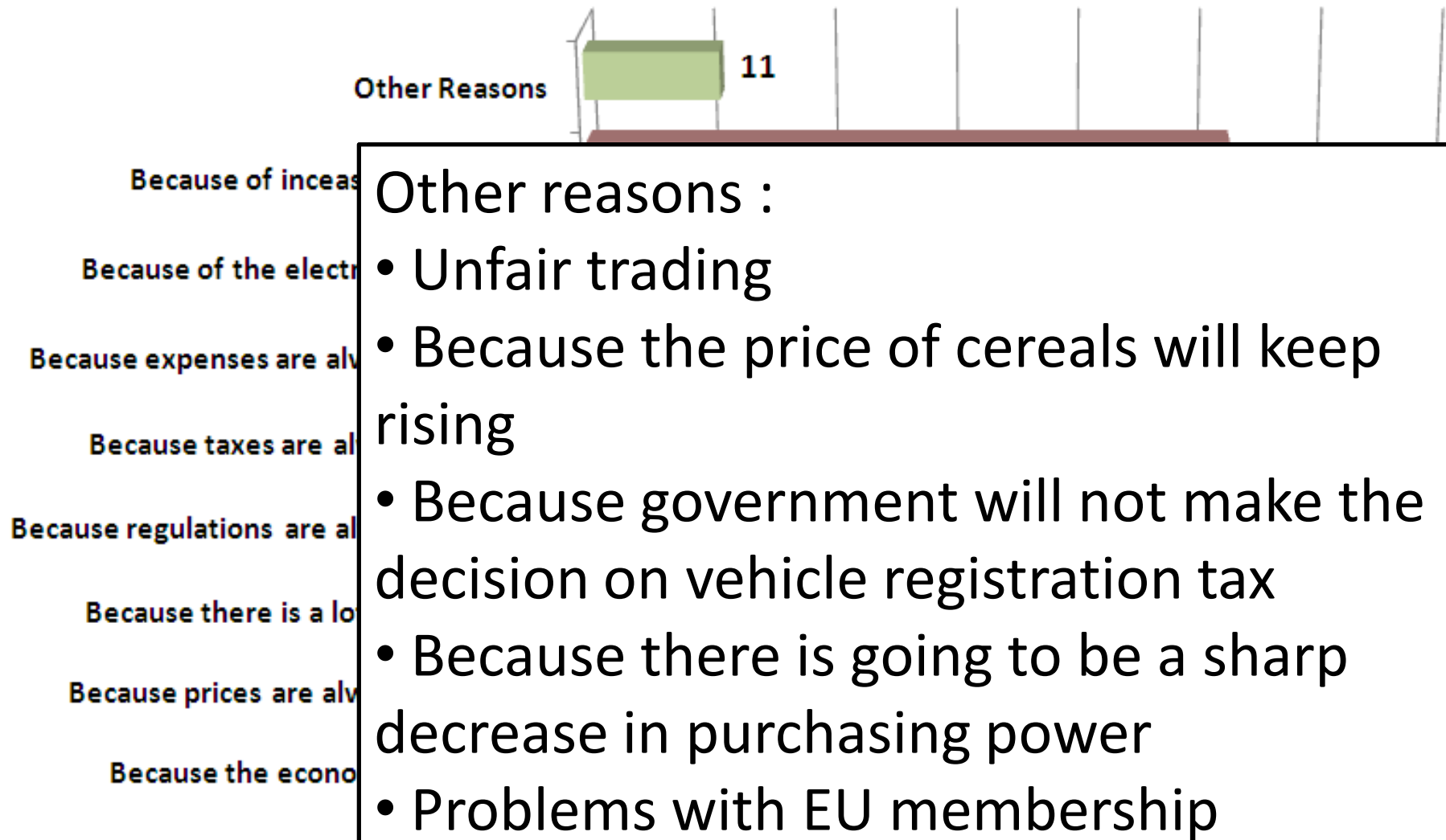
## Why do you think that the remainder of 2008 will be better ? (multiple selections out of those respondents who think it will better)



**Why do you think that the remainder of 2008 will be worse ?**  
(multiple selections out of those respondents who think it will be worse)

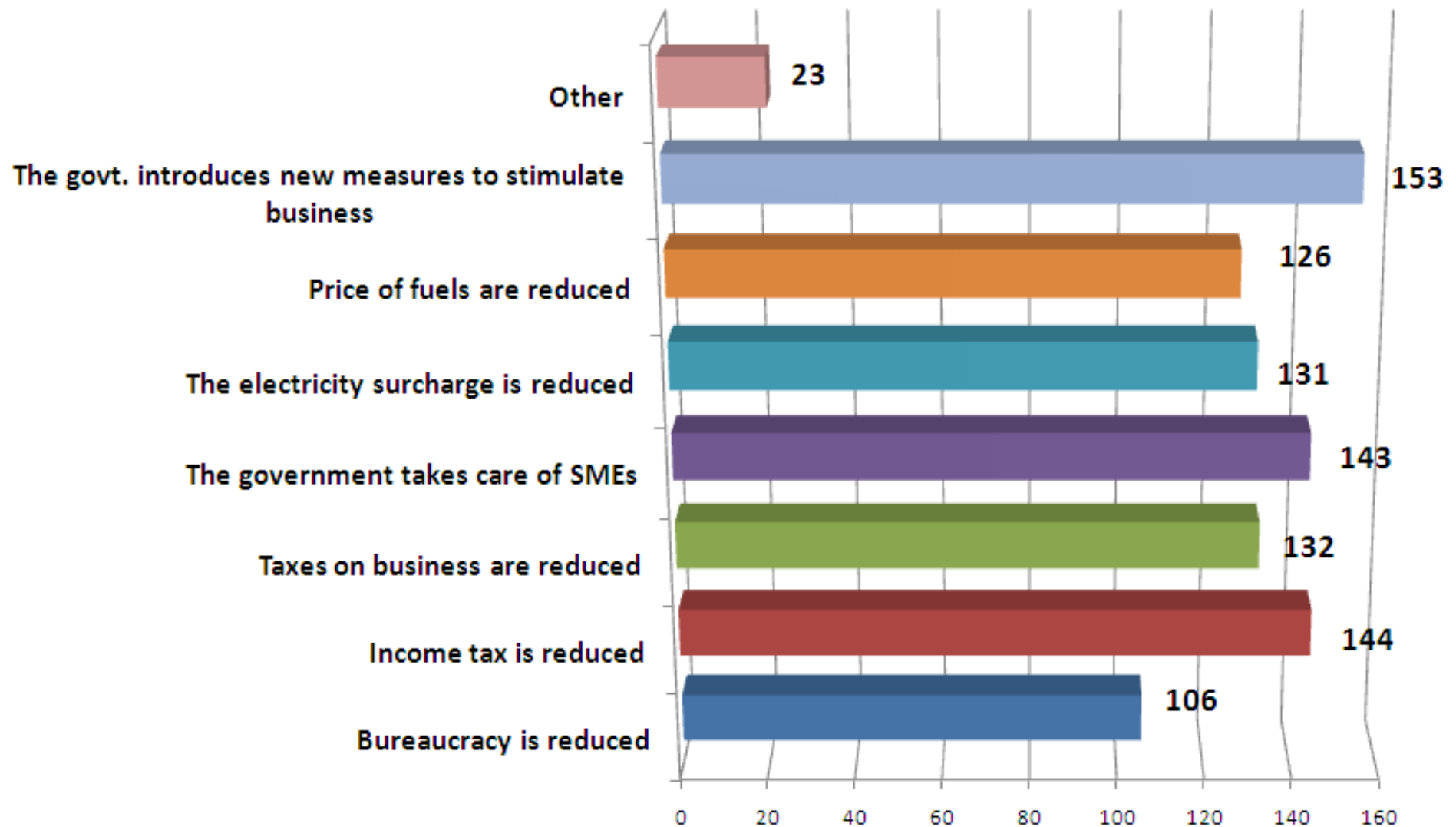


Why do you think that the remainder of 2008 will be worse?  
(multiple selections out of those respondents who think it will be worse)



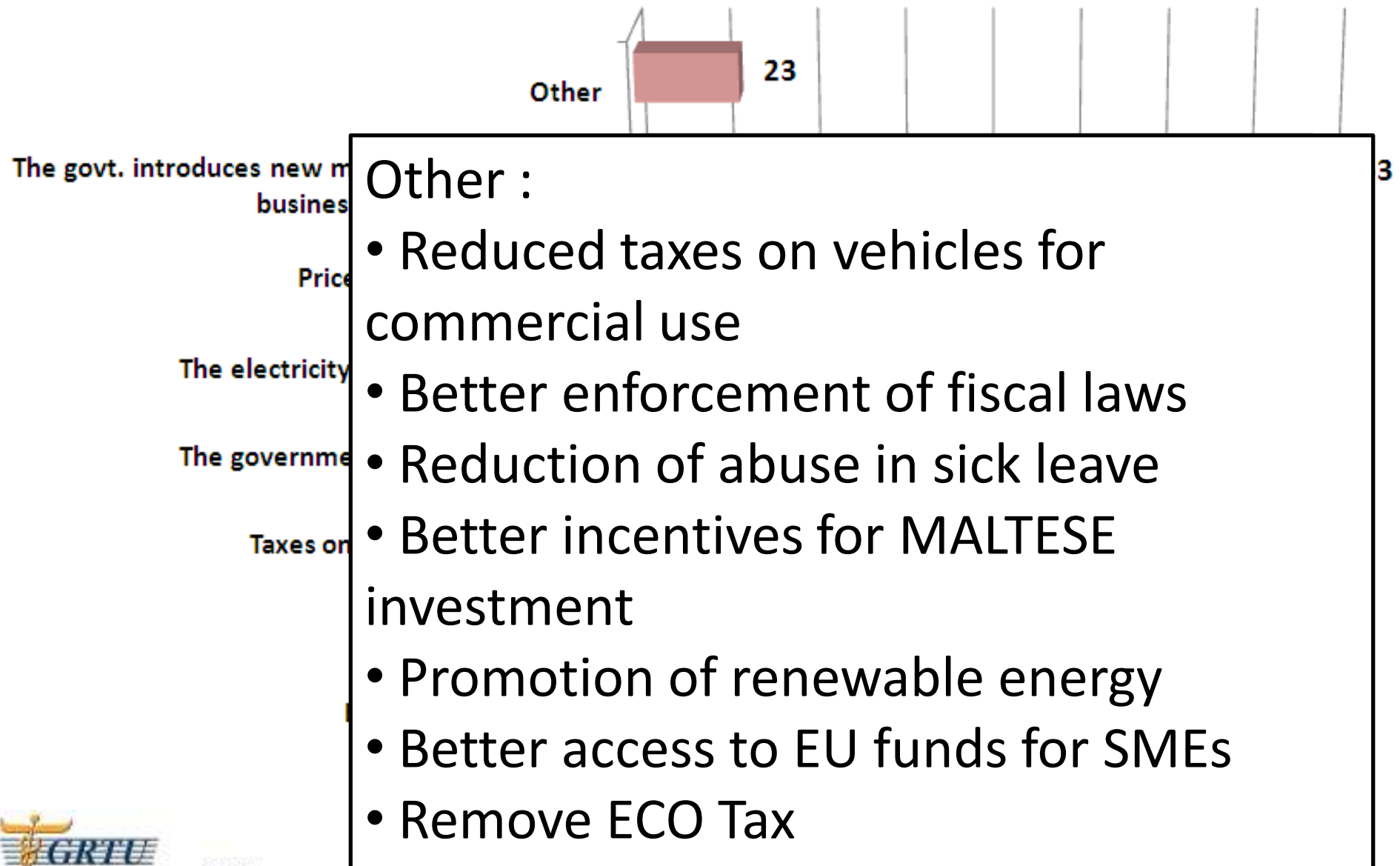
# What is your wish for the remainder of 2008 ?

(multiple selections out of 290 respondents)

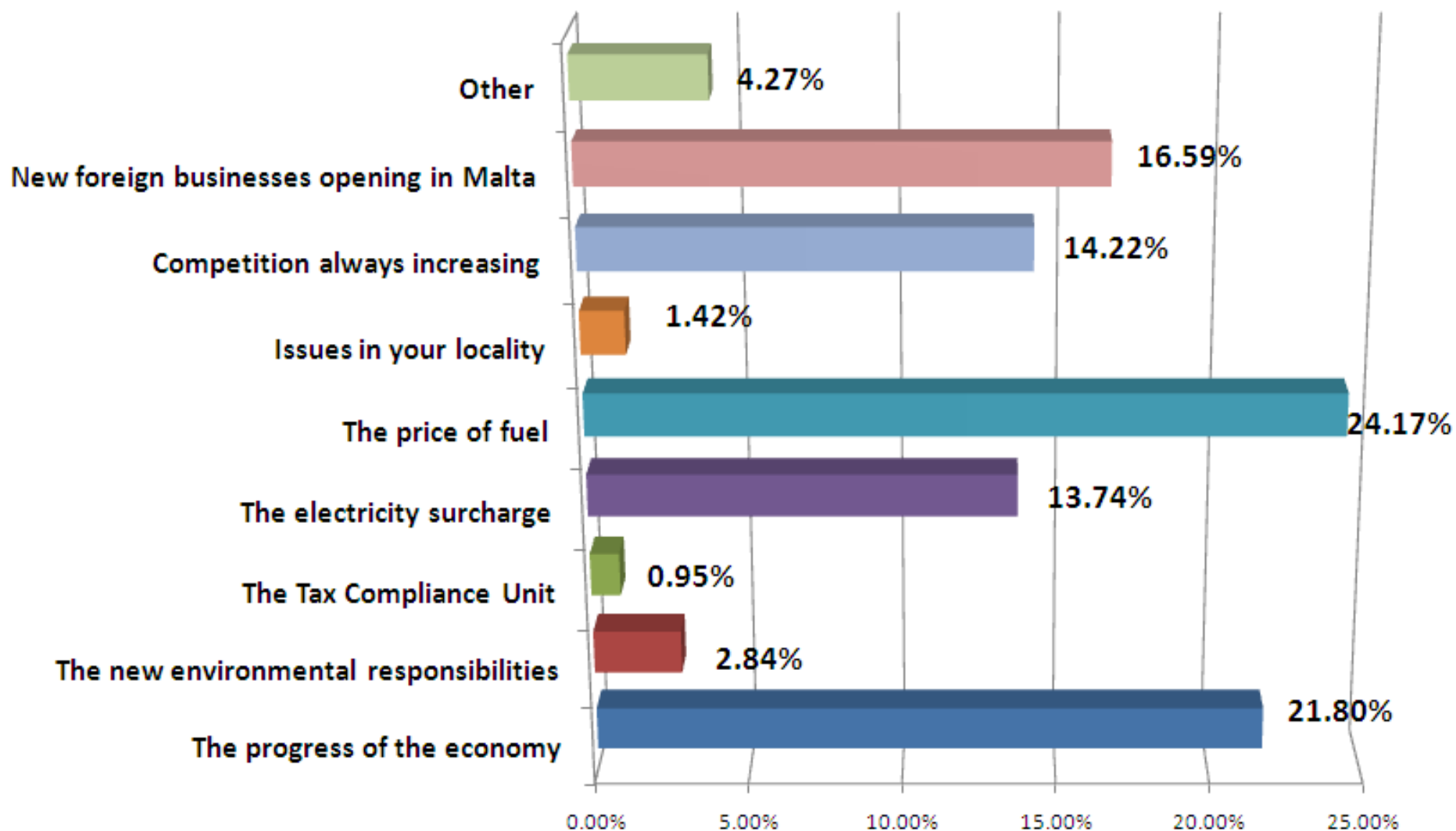


# What is your wish for the remainder of 2008 ?

(multiple selections out of 290 respondents)

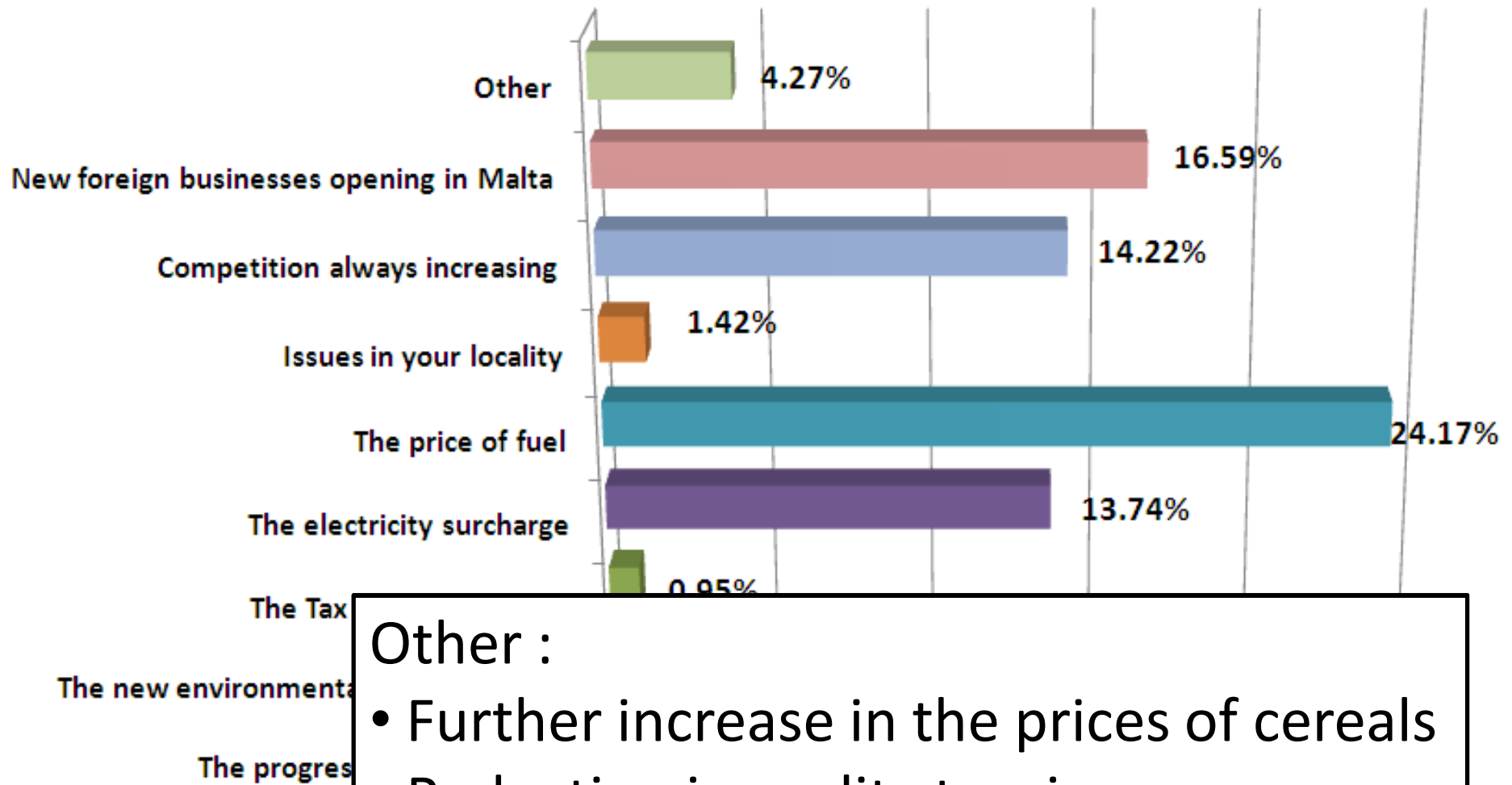


## What is worrying you most for the remainder of 2008 ? (single selection per respondent)



# What is worrying you most for the remainder of 2008 ?

(single selection per respondent)



Other :

- Further increase in the prices of cereals
- Reduction in quality tourism
- Unfair competition

**THANK YOU**

[www.grtu.eu](http://www.grtu.eu)